



**ATHENA**

**On A Mission To Save Lives**

# COVID-19 Pandemic

*Virus is the new enemy:  
Health screens will be  
more accessible for the  
safety of all.*

*How to keep your  
facility open?*

# The New Normal To Protect Your Employees, Customers, And Community: Monitor For Symptoms

## Screen For Fever Symptom To Prevent The Spread

### SYMPTOMS OF CORONAVIRUS DISEASE 2019

Patients with COVID-19 have experienced mild to severe respiratory illness.

Symptoms\* can include

**FEVER**



**COUGH**



\*Symptoms may appear 2-14 days after exposure.

Seek medical advice if you develop symptoms, and have been in close contact with a person known to have COVID-19 or if you live in or have recently been in an area with ongoing spread of COVID-19.

**SHORTNESS OF BREATH**



CS 315253 4 08/11/2020

For more information: [www.cdc.gov/COVID19-symptoms](https://www.cdc.gov/COVID19-symptoms)

# Multiple Problems With Current Methods



Requires violating social distancing at high risk to operator

Too slow to be practical

Risk of cross-contamination

Handheld device only take 1 point of temperature

Labor intensive



# Introducing Athena's Temperature Detection System for Fevers

## Improved Rapid Screening

### **Fast and Frictionless**

Built for pedestrian traffic, non-contact

### **Highly Accurate**

HSRP continuously calibrates

### **Don't Need An Operator**

System finds the face, forehead, and eyes and sends alert, or display on screen

### **Automated And Easy**

Turn-key solution, Enterprise Management

**Not Just  
Hardware**

**An Enterprise  
Software  
Platform**

**Alerts**

**Central management**

**Enterprise user management**

**Integration to Video  
Management System**

**Data Management, Reporting**

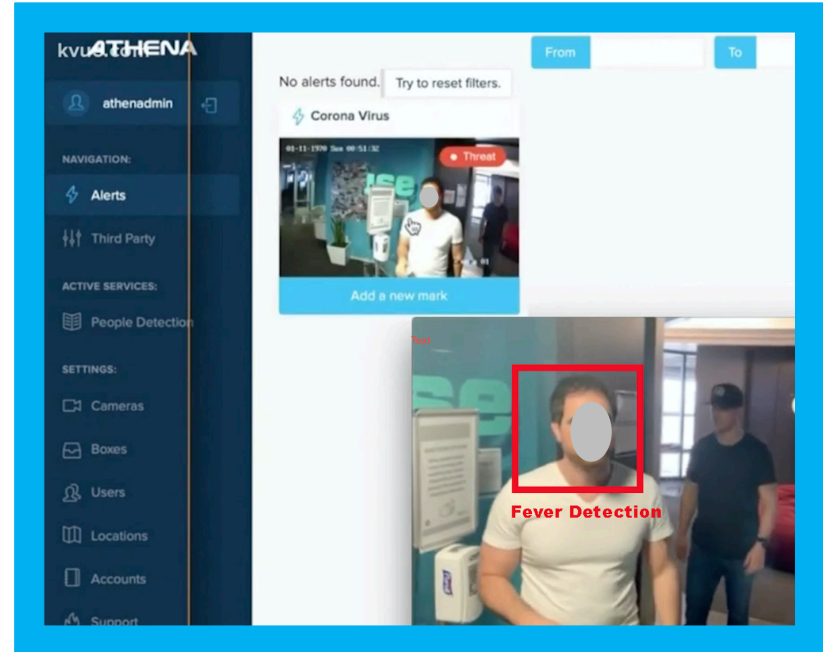
**Self-monitoring platform**

# Solutions For Every Environment



# KVUE TV In Austin, on March 22nd

Austin-based Company Promoting Turn-Key Fever Detection System [link to news ]





# How it Works



HighTemp



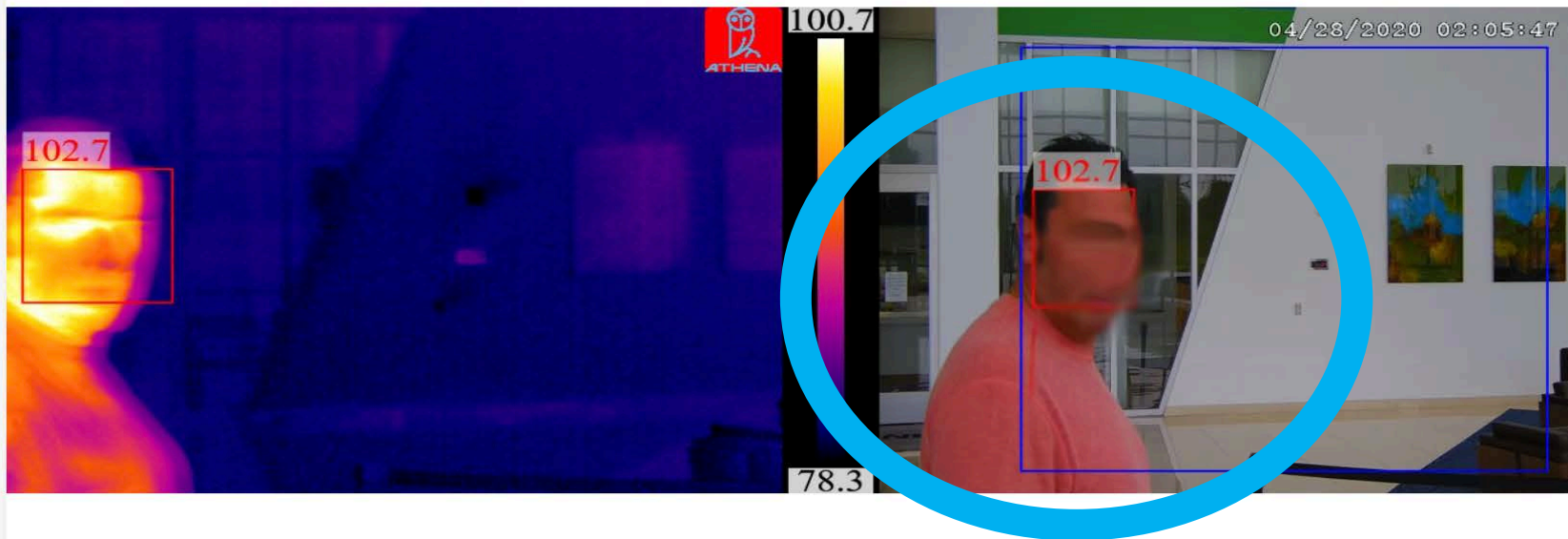
Crane Cam 1



3 days ago



New



Temperature can be modified threshold to alert on

[Confirm](#)[False](#)[Admin panel](#)[Camera on map](#)



## Top Features

### **Enterprise Platform**

Easy to deploy, scale devices, maintain, manage users, manage alerts, reporting, and integration options.

### **Thermal and Visual Camera Options**

Highly accurate infrared thermal cameras with HSRP device for consistent results.

### **Fast, Frictionless, Automated Screening**

System is “always on”, and automatically reboots. Staff less exposed to infection than handheld thermometer method.

### **Temperature Alarm and Enterprise Notification System**

Temperatures above the notification threshold trigger an alert to the web and mobile applications.





# Temperature Detection System Features

## **Athena Fever Detection System**

- Easy to setup and operate
- 50 mk sensitivity, .3<sup>o</sup> C accuracy
- Integrated visual camera
- Turnkey system
- Alerts to web browser & mobile app
- HSRP continuously calibrates to ensure accuracy

## **Athena Temperature Detection Screening Interface**

- Simple user interface
- Operator-free automated screen
- Audible alarm notifications
- Alarm notification via secure web app
- Alarm notification via mobile app
- Ambient temperature compensation
- Distance compensation
- Verifies subject
- Automatic alerts log
- Historical archive, with retention or delete capability
- Integrates with Security Management Systems
- Integrates with Video Management Systems

# Infrared Thermal Camera Specifications, and Operating Parameters

Athena Fever Detection Camera  
Model ATH-AMDGF-14

## Specification

Style: bullet camera  
+ or -0.3C accuracy, infrared thermal  
Alarm in under 1 second  
High precision temperature sensor  
Under 0.2 F temperature drift  
Frame rate 30/50 Hz  
384 x 288 resolution  
Working band 8 – 14 um  
Measuring range 0– 50 Hz  
Output H.264 RTSP stream  
Power Supply is DC9 – 15V

*Networking: 100/1000 Base Ethernet,  
FOV 25 degrees*

## Operating Parameters

Operating temp 0 F to 130 F  
Storage -32 F to 170 C  
Humidity: non condensing 10-95%  
Shell protection IP54  
Impact resistance 25G  
Vibration resistance 2G  
Installation 4 M3 thread mount holes, ¼ UNC-20  
Designed for use inside, enclosed areas



## Product Characteristics

Typically, with this type of sensor, the larger the operating temperature range, the less accurate the system is. This model's accuracy is maintained between operating temperatures of 0°F and 130°F, and should cover typical indoor use.

The camera will self-adjust automatically based on ambient temperature. When setting up or moving the camera from one environment to another, allow ten minutes for the internal components of the camera to reach the new environment's temperature.

This model's accuracy of 0.3°C is much higher than industrial purposed infrared cameras that typically are no better than a + or – of 2.0°C

Configurable alarm temperature threshold, recommended no higher then 38°C, which is 100.4°F. System preset to 99.4

## Appropriate Scenarios

Create a choke point and have instructions for persons coming through this pre-screening zone to remove headwear and eyewear. Hats and glasses can cause inaccurate measurements. Up to 1500 people can be scanned by each unit per hour.

Hospital  
Surgery Center  
Pharmacy  
Grocery  
Critical Infrastructure  
Bank  
Metro  
Private Company  
Airport  
Transit Centers  
Borders  
Schools  
Critical Government Buildings  
Bars  
Venues  
Restaurants

[Info@Athena-Security.com](mailto:Info@Athena-Security.com)

## **The World Has Changed**

We need to act now to protect the most vulnerable.

*Early detection and quarantining  
people will save lives.*

---

*We have a duty to use cutting edge  
technology to save lives.*

**Start  
Screening  
Now**

# COVID-19 Pandemic Guidance

## Guidance on preparing your workplace



## Guidance on COVID-19 Symptoms

